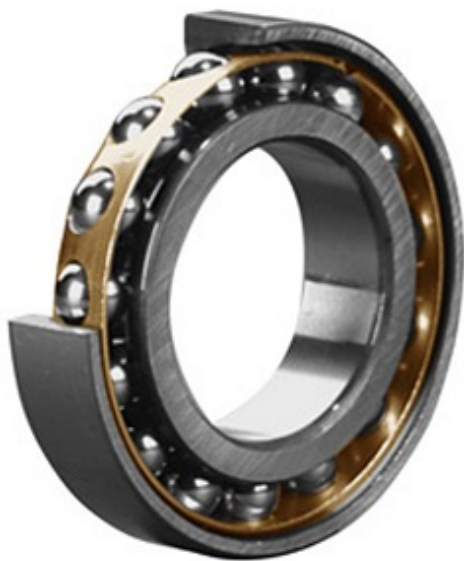




Timken PRECISION AXLE Manufacturing C...



1.5 Inch | 38.1 Millimeter x 3.25 Inch | 82.55
Millimeter x 0.75 Inch | 19.05 Millimeter
CONSOLIDATED BEARING LS-13-AC D
Angular Contact Ball Bearings

Bearing No. LS-13-AC D

LS-13-AC D Bearing 2D drawings and 3D CAD models

Category	Angular Contact Ball Bearings
Inventory	0.0
Manufacturer Name	CONSOLIDATED BEARING
Minimum Buy Quantity	N/A
Weight	0.44
EAN	0644075031059
Product Group	B00308
Enclosure	Open
Flush Ground	Yes
Rolling Element	Ball Bearing
Number of Rows of Balls	Single Row
Precision Class	ABEC 1 ISO P0
Maximum Capacity / Filling Slot	No
Snap Ring	No
Cage Material	Brass
Contact Angle	25 Degree
Internal Clearance	C0-Medium
Number of Bearings	1 (Single)
Mounting Arrangement	Universal
Inch - Metric	Inch
Long Description	1-1/2" Bore; 3-1/4" Outside Diameter; 3/4" Width;



Timken PRECISION AXLE Manufacturing C...

	Open; Yes Flush Ground; Ball Bearing; Single Row of Balls; ABEC 1 ISO P0; No Filling Slot; No Snap Ring; C0-Medium; Brass Cage; 25 De
Category	Angular Contact Ball Bearing
UNSPSC	31171531
Harmonized Tariff Code	8482.10.50.28
Noun	Bearing
Keyword String	Angular Contact
Manufacturer URL	http://www.consbrgs.com
Manufacturer Item Number	LS-13-AC D
Weight / LBS	1.1
D	3.25 Inch 82.55 Millimeter
B	0.75 Inch 19.05 Millimeter
d	1.5 Inch 38.1 Millimeter